



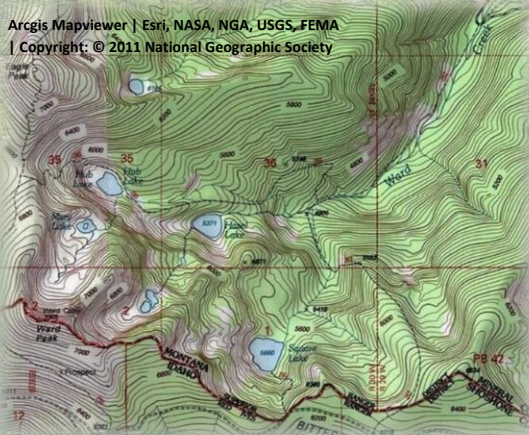
Hub Lake:

Difficulty: *Classic*

Distance: 3.75 miles

Trailhead Elevation: 4015 feet; **Trailhead Lat/Long:** 47°17'12.16"N / 115°20'19.52"W

Lake Elevation: 5715 feet; **Lake Lat/Long:** 47°16'30.95"N / 115°22'29.13"W



Getting There: Take the Ward Creek Road (# 889) exit off I-90. The exit is only accessible from the East bound lanes and sits right on a sharp corner, if not paying attention you could miss it. Drive (~6 miles) to a switchback and bridge across Ward Creek where there is a sign for the trailhead and ample parking. Stay on the main road, you will pass the road that leads to Up Up Lookout at mile 3. The lookout is rentable, but not recommended for small children for safety reasons. Trail (#262) starts out meandering



Mine Entrance Above Hub Lake

Getting There: Take the Ward Creek Road (# 889) exit off I-90. The exit is only accessible from the East bound lanes and sits right on a sharp corner, if not paying attention you could miss it. Drive (~6 miles) to a switchback and bridge across Ward Creek where there is a sign for the trailhead and ample parking. Stay on the main road, you will pass the road that leads to Up Up Lookout at mile 3. The lookout is rentable, but not recommended for small children for safety reasons. Trail (#262) starts out meandering



Kathy, Hub Lake 2022

through the bottoms and some cedar groves. The trail climbs moderately and after a mile or so you will get to a nice set of waterfalls that are far below the trail. It is a very steep climb down to them but worth it.





Lakes of the Great Burn & More



Hub Lake from Eagle Peak 2020

The trail splits shortly after the falls with trail #262 turning left steeply up the hill and back towards the state line; there is a sign at the intersection. This is not a shortcut to Hazel Lake, nor does it go to Square Lake. Rather it ends up on the state line road (#391) about ¼ mile from the Square Lake trailhead. You can see portions of it along the hillside across the valley if you look closely.

Continue straight on trail #280 that heads back along the hillside to a couple of switchbacks before the trail lines out for Hazel

Lake. The trail has plenty of water for your dog, so no need to carry extra. Hazel Lake is about 3 miles from the trailhead.

From Hazel Lake trail. It is less than a with an elevation feet. The trail takes a hundred yards to outlet creek and then back up and then lake.



Hub Lake 2022

continue up the main mile up to Hub Lake gain of less than 400 sharp dip for a couple cross the Hub Lake immediately goes quickly arrives at the



Hub Lake 2024

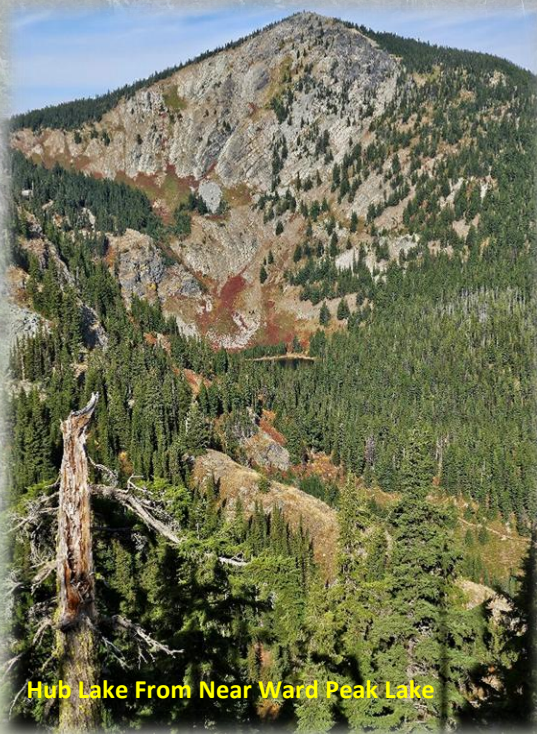


Hub Lake from Mary Lake





Lakes of the Great Burn & More



Hub Lake From Near Ward Peak Lake

At the Lake: There are several well-established campsites at both the outlet and on the other side of the lake. Much like Hazel Lake but I think it is worse, the couple times I have been to the lake it has always been rather buggy. Fishing can be good at times. There is an old mine above the lake that a lot of people hike to.

Bonus Route: Alternatively, you can reach Hub and Hazel Lake by starting at the Ward Peak Trailhead (trail #250) on the state line road (#391) and dropping down from the saddle between Ward and Eagle Peak. The trail is good, but I would consider this the more difficult approach as

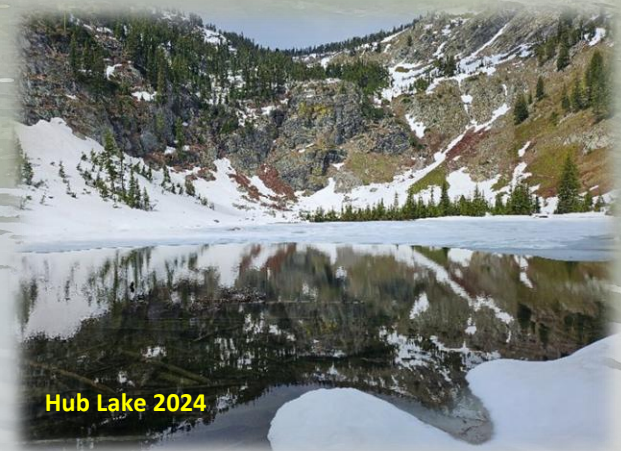


Hub Lake 2022

the way out is a steep dry climb up to the low saddle between Ward and Eagle Peaks and then continuing up around Ward Peak until you drop back down to the trailhead back to your vehicle.



Hub Lake 2024



Hub Lake 2024





Lakes of the Great Burn & More

